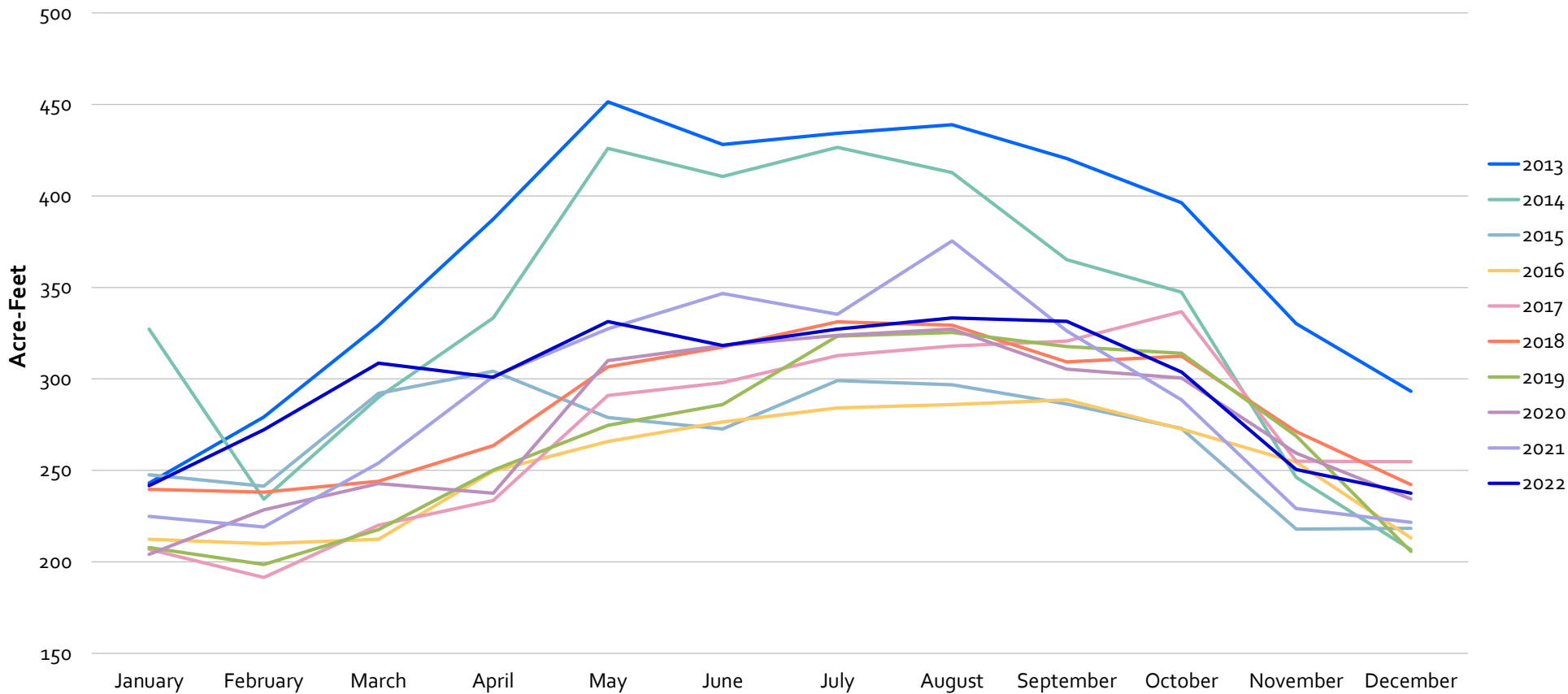
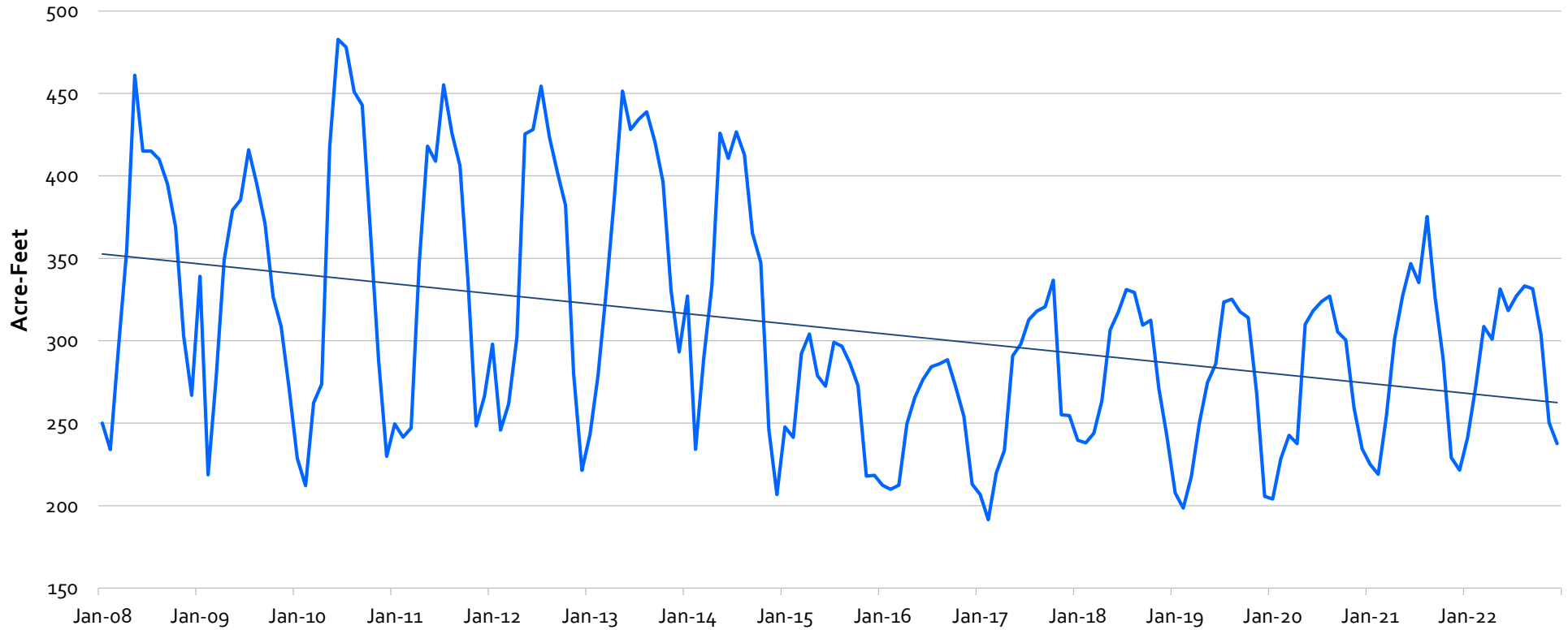


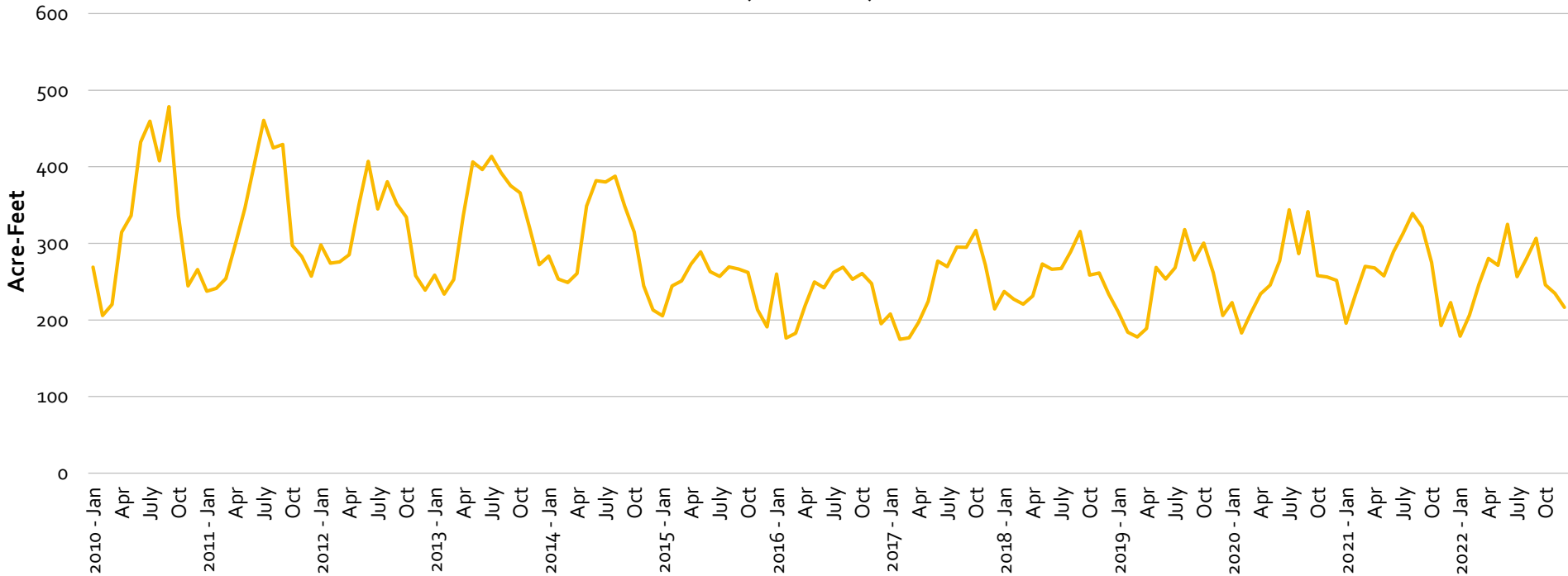
2013-2022 Total Production by Month (Acre-Feet)



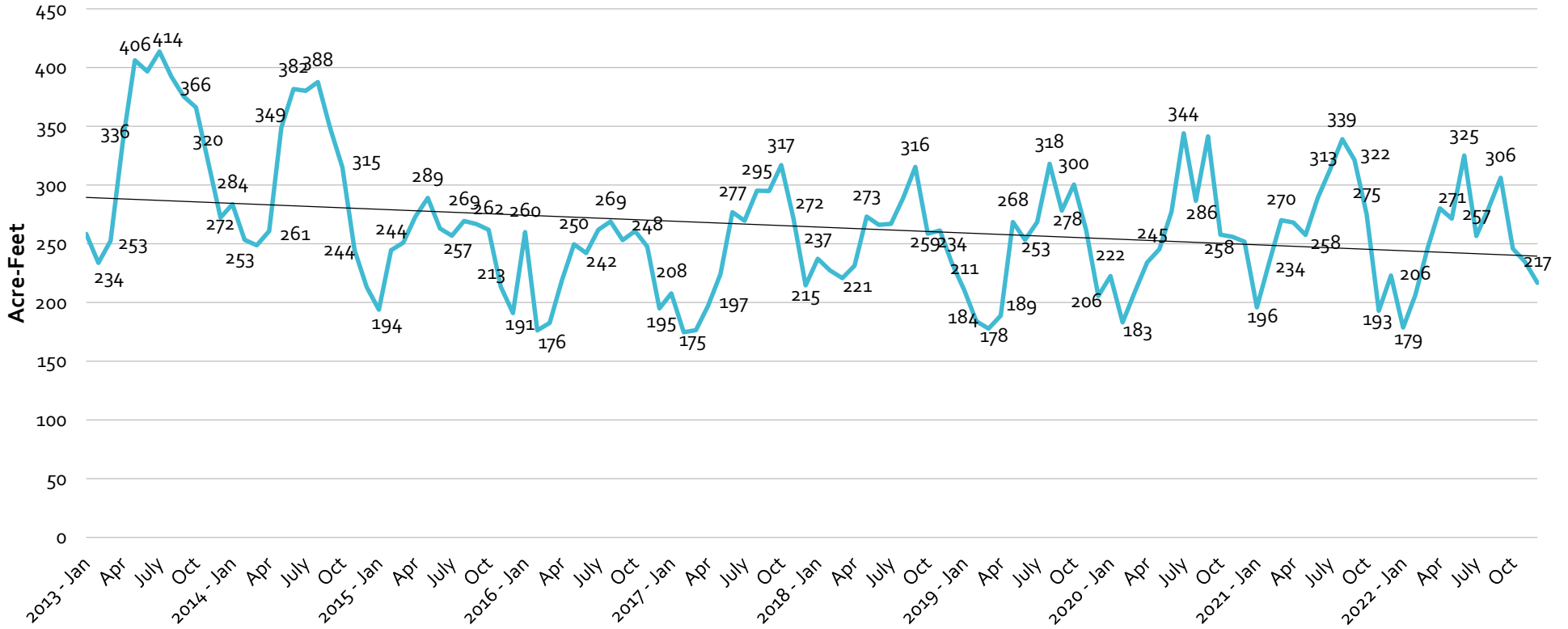
2008-2022 Total Production by Month (Acre-Feet)



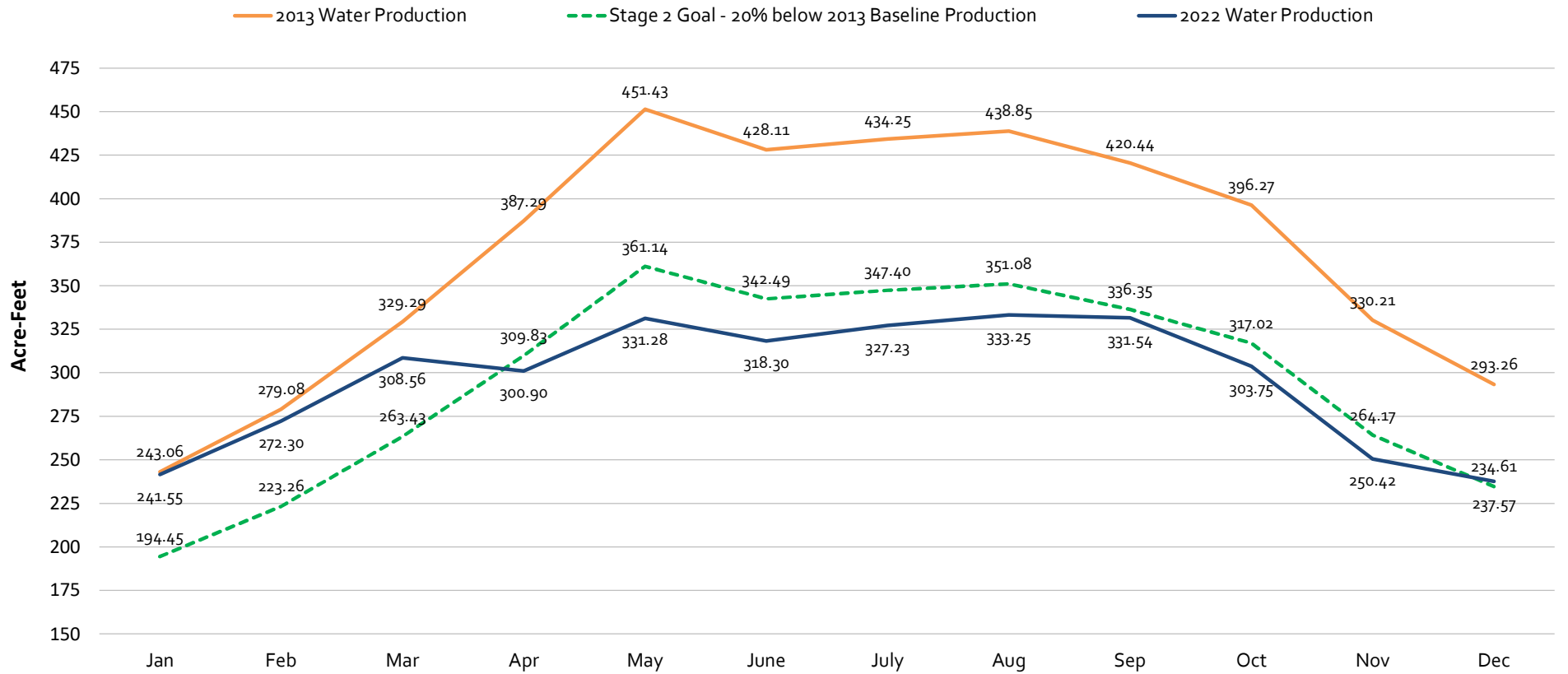
**2010 - 2022 Annual Total Consumption by Month
(Acre-Feet)**



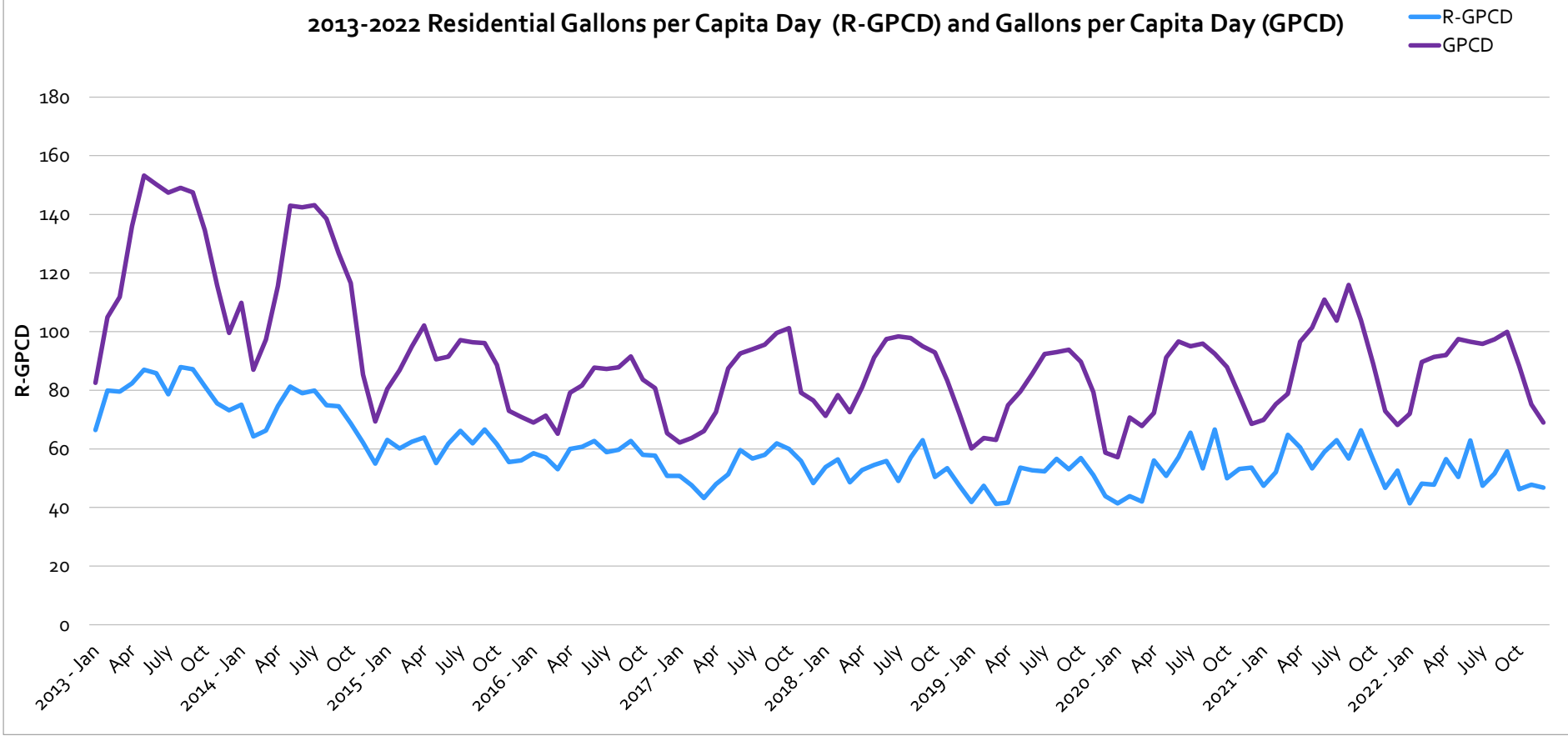
2013 - 2022 Total Billed Consumption (Acre-Feet)



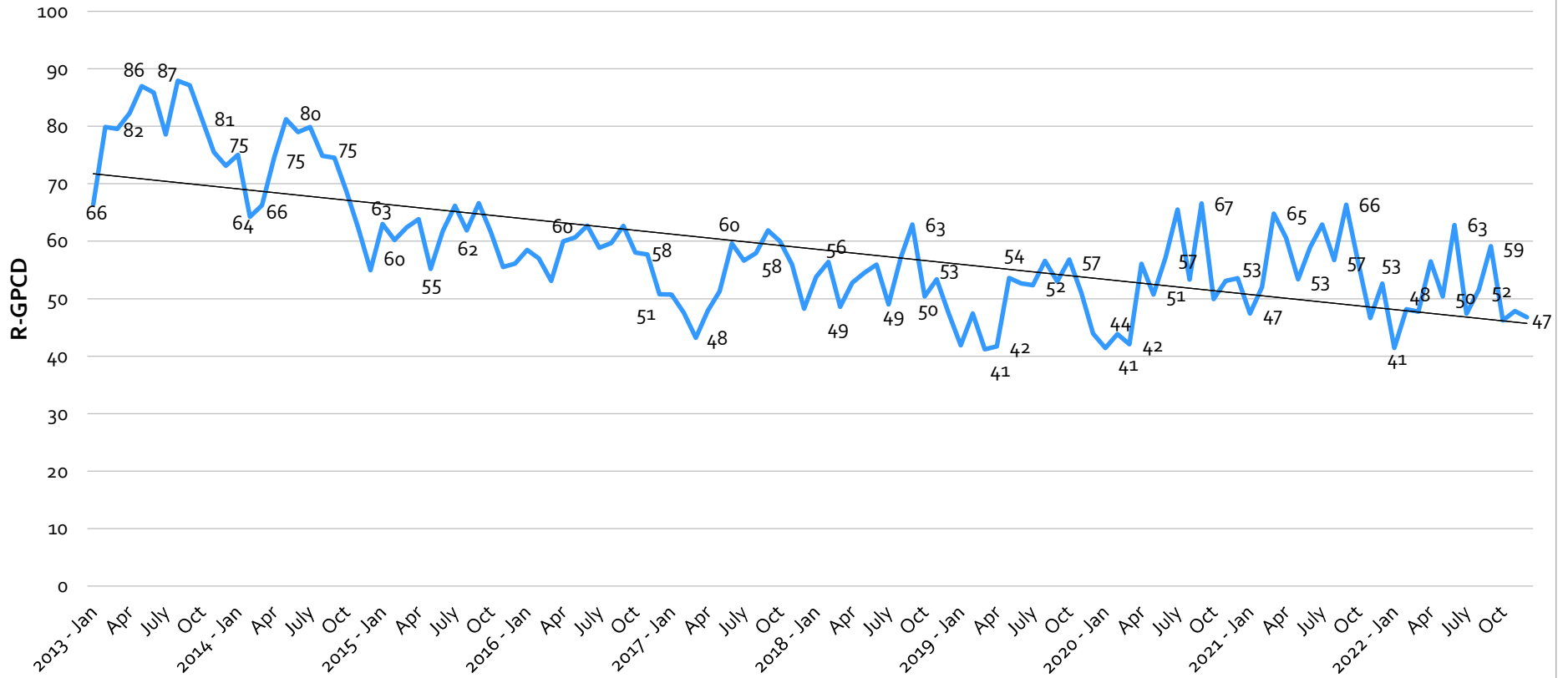
2022 Production VS. Water Production Reduction Goals



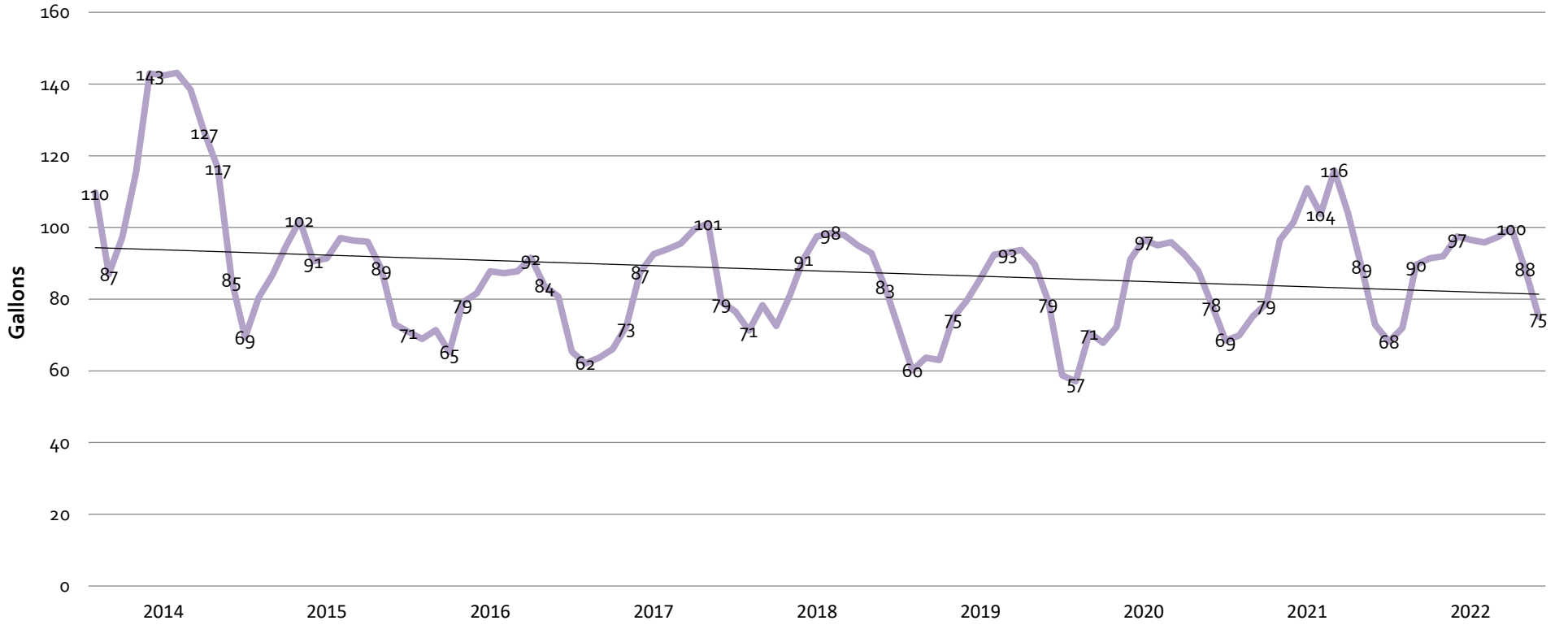
2013-2022 Residential Gallons per Capita Day (R-GPCD) and Gallons per Capita Day (GPCD)



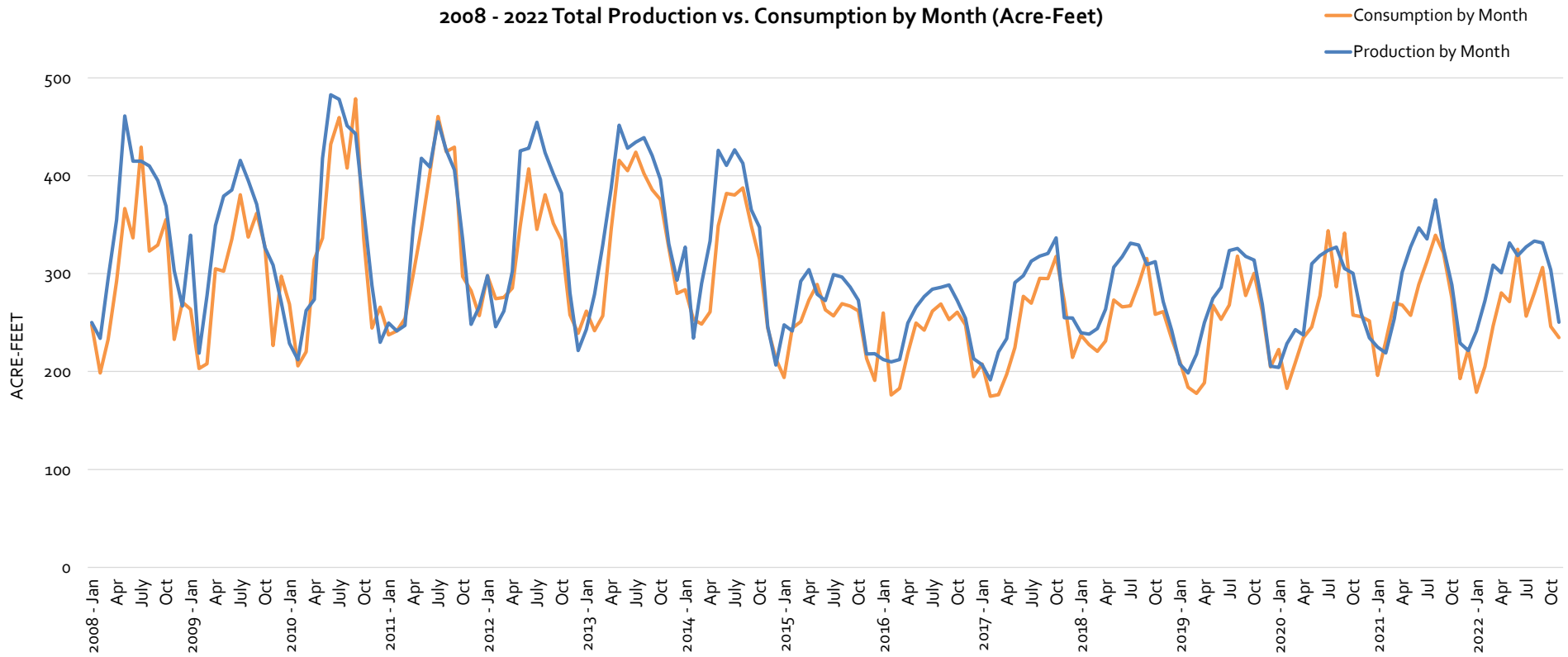
2013-2022 Residential Gallons per Capita Day



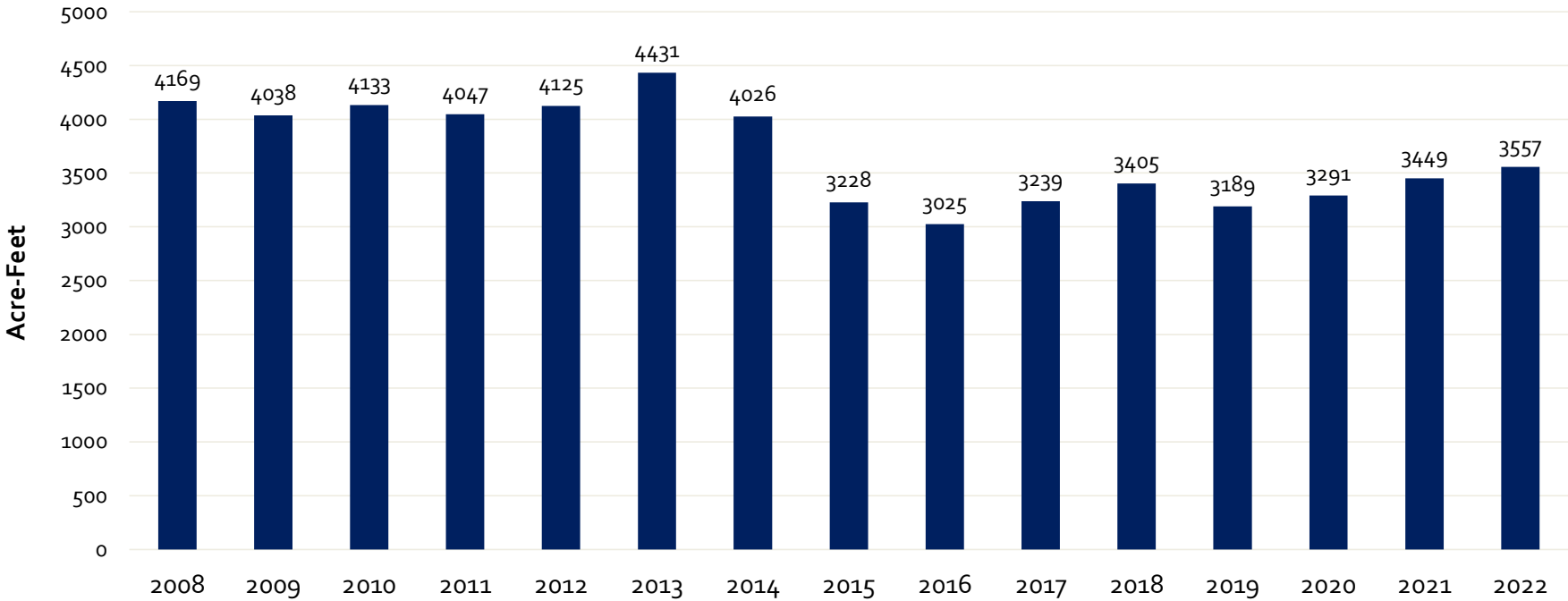
2014-2022 Monthly Gallons Per Capita Day (Gross Production)



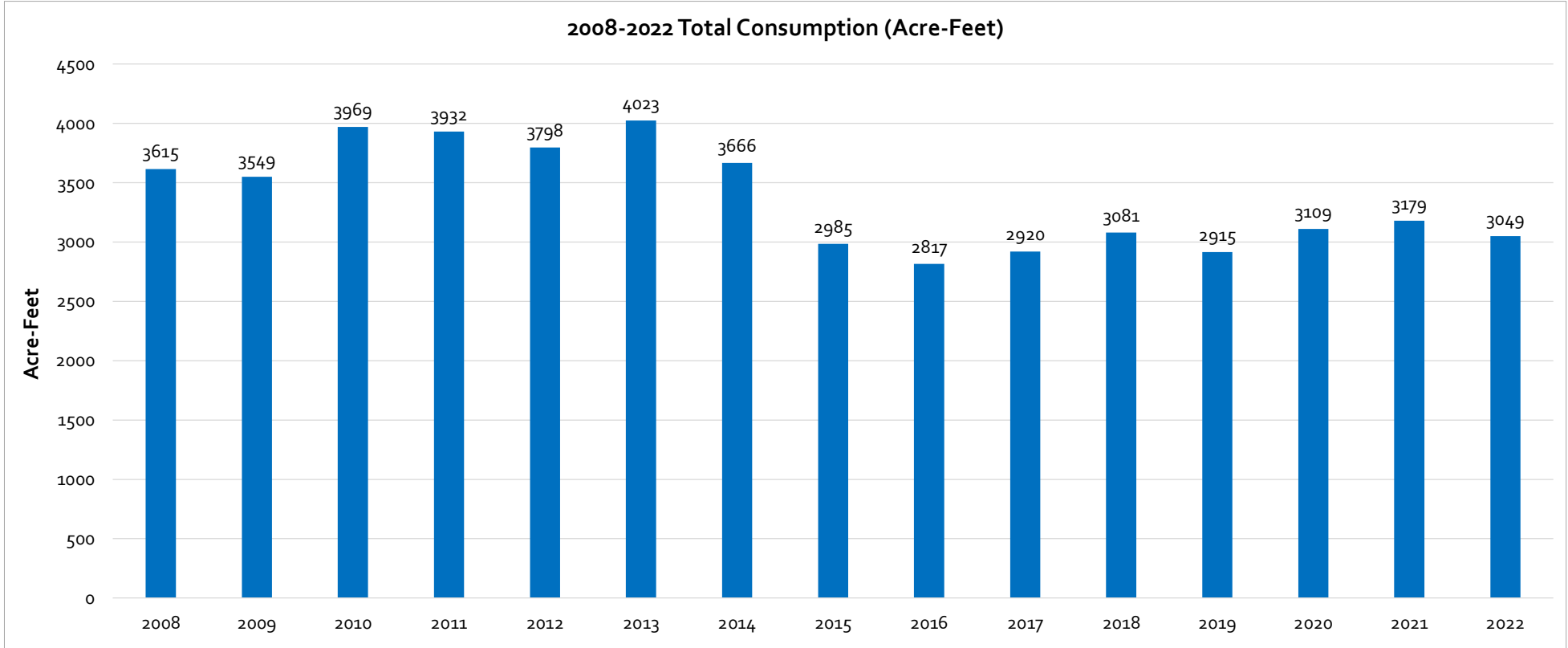
2008 - 2022 Total Production vs. Consumption by Month (Acre-Feet)



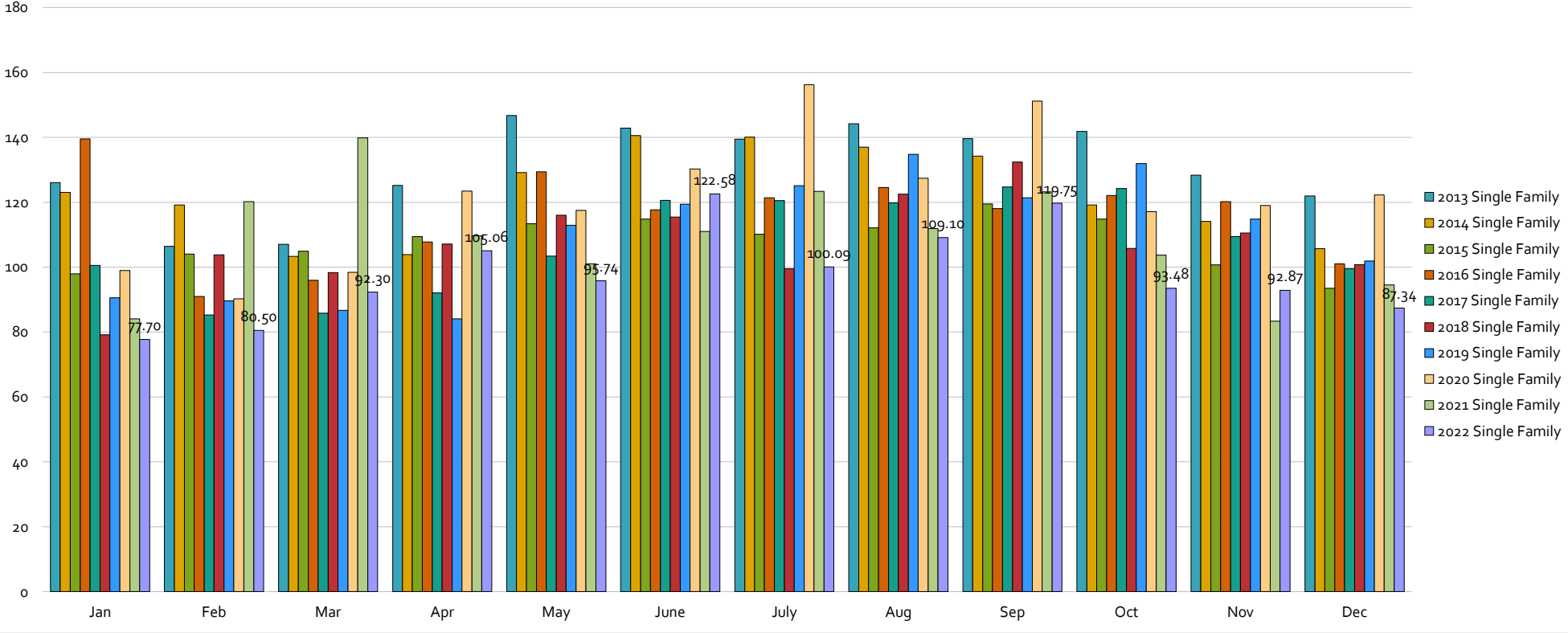
2008-2022 Well Production by Year (Acre-Feet)



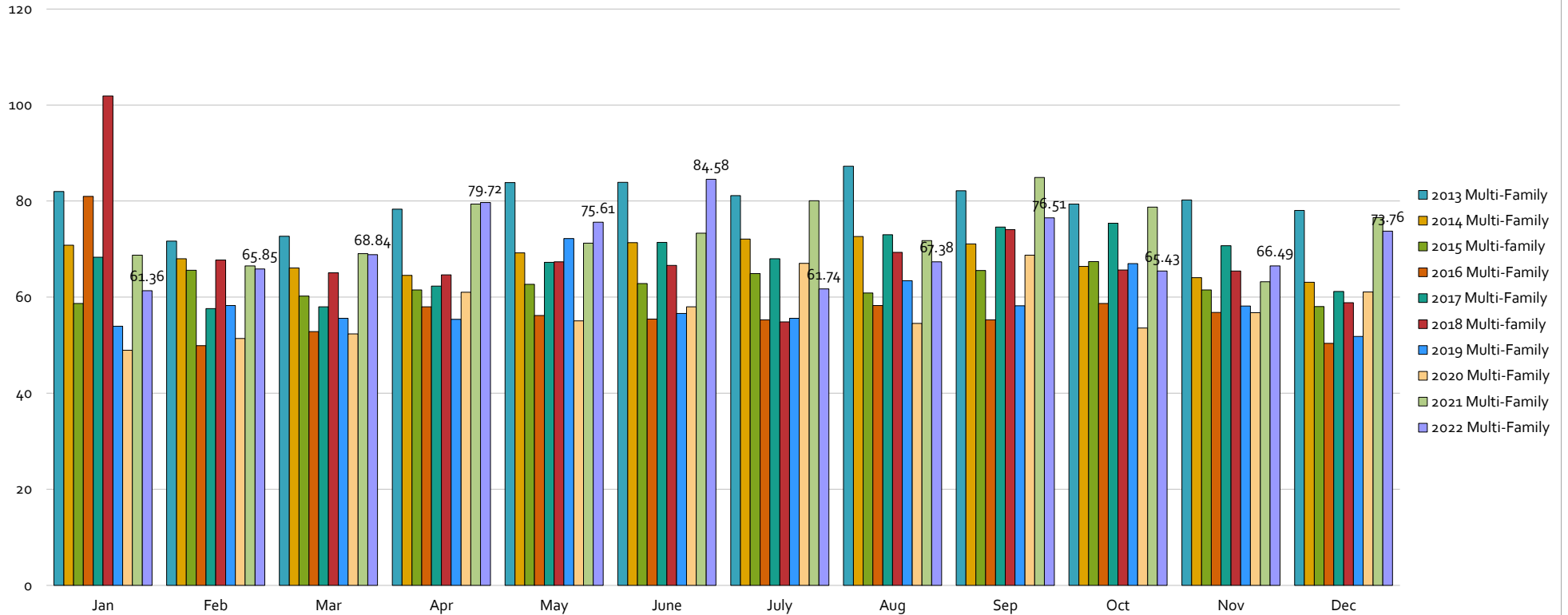
2008-2022 Total Consumption (Acre-Feet)



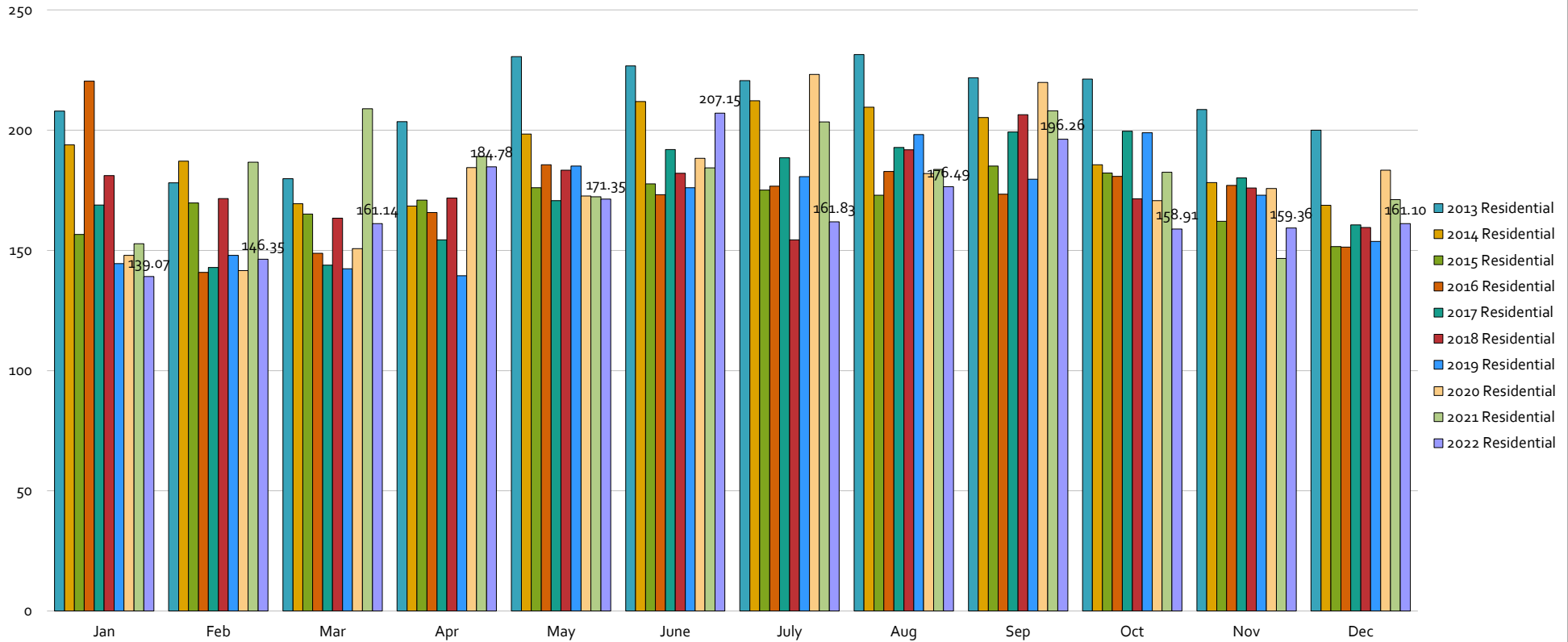
2013-2022 Single Family Consumption by Month (Acre-Feet)



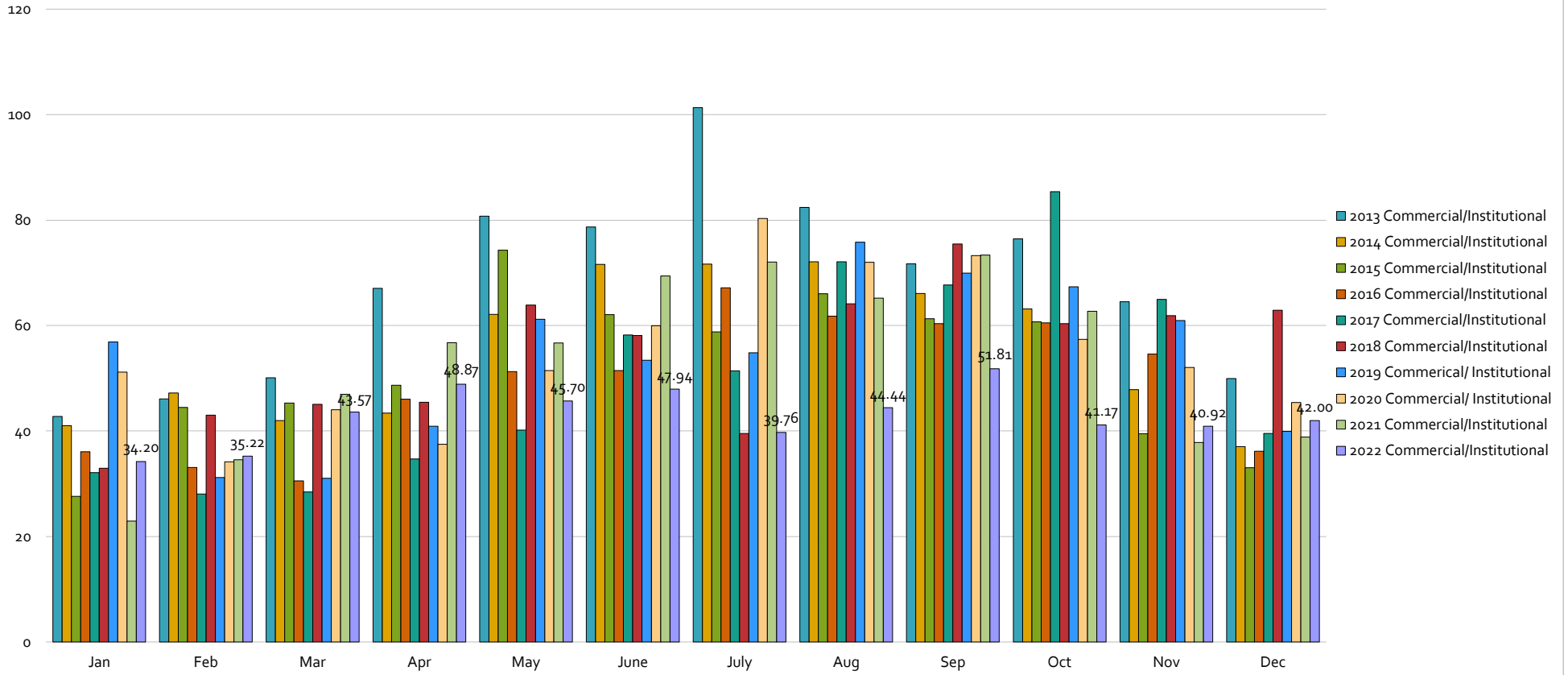
2013-2022 Multi-Family Total Consumption by Month (Acre-Feet)



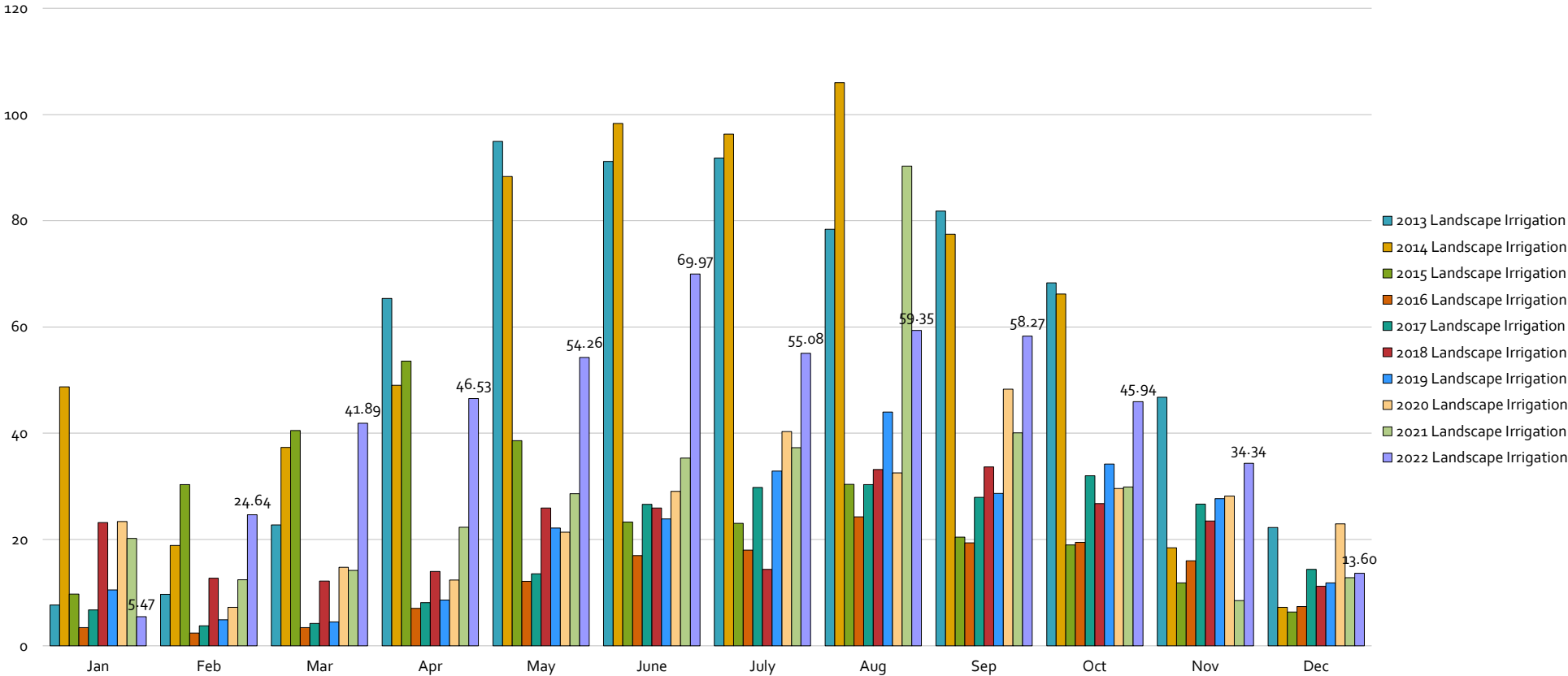
2013-2022 Residential Total Consumption by Month (Acre-Feet)
(Single-Family and Multi-family Combined)



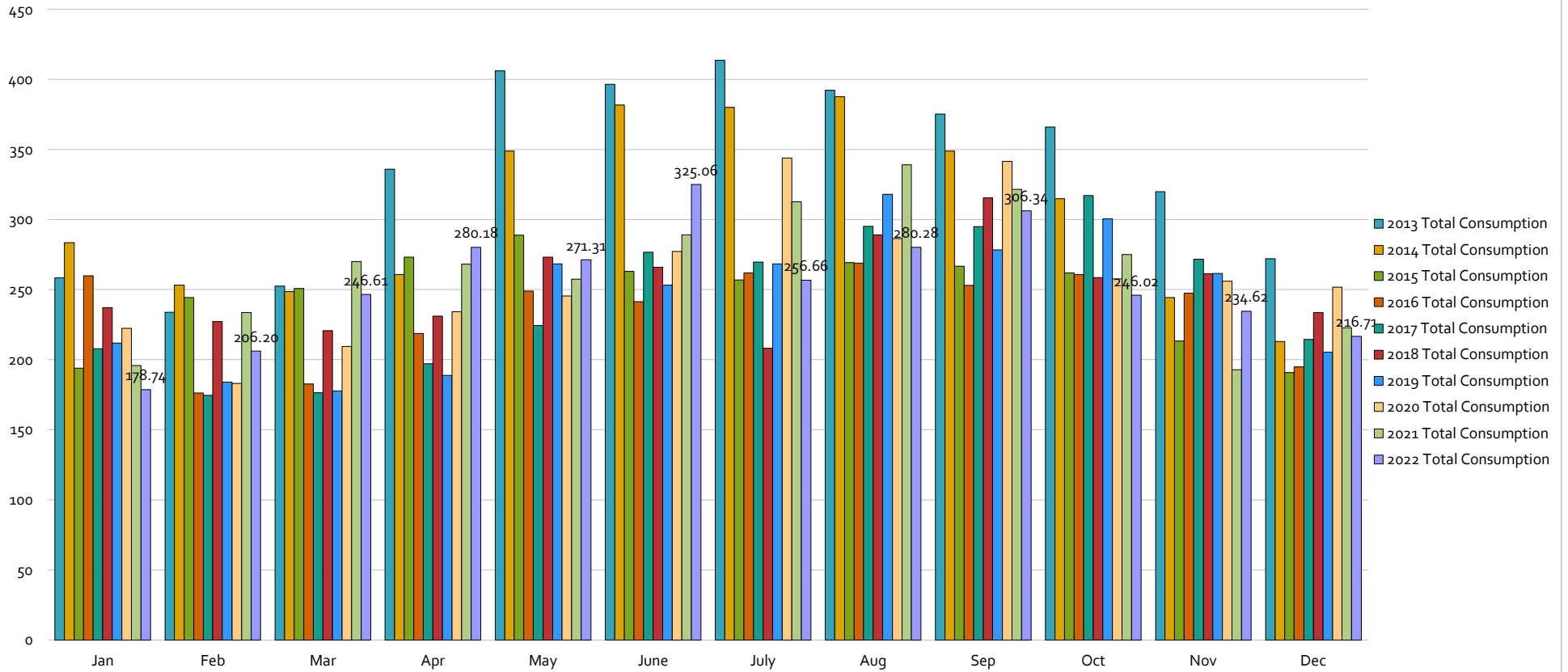
2013-2022 Commercial/Institutional Consumption by Month (Acre-Feet)



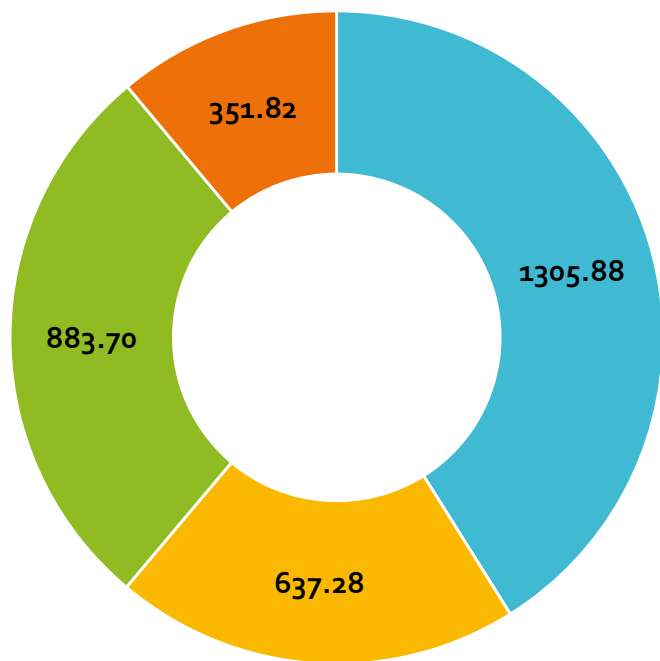
2013-2022 Landscape Irrigation Consumption by Month (Acre-Feet)



2013-2022 Total Consumption by Month (Acre-Feet)

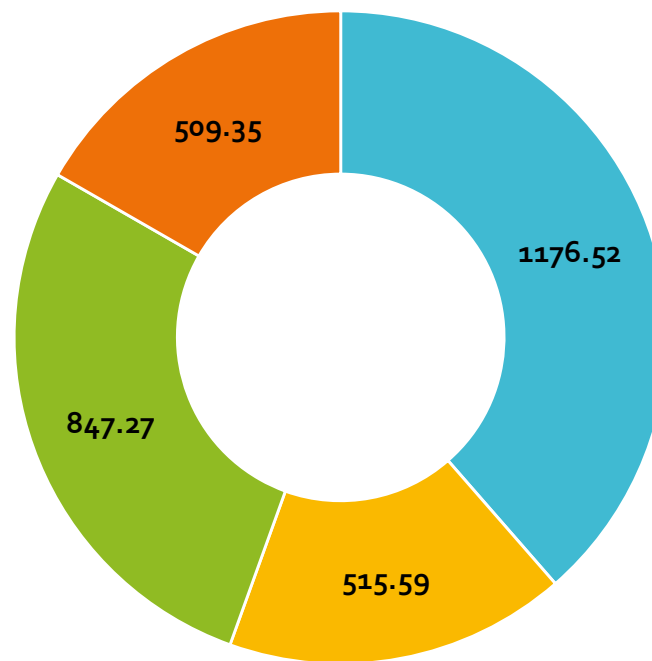


Total Billed Consumption 2021 (3178.67 AF)



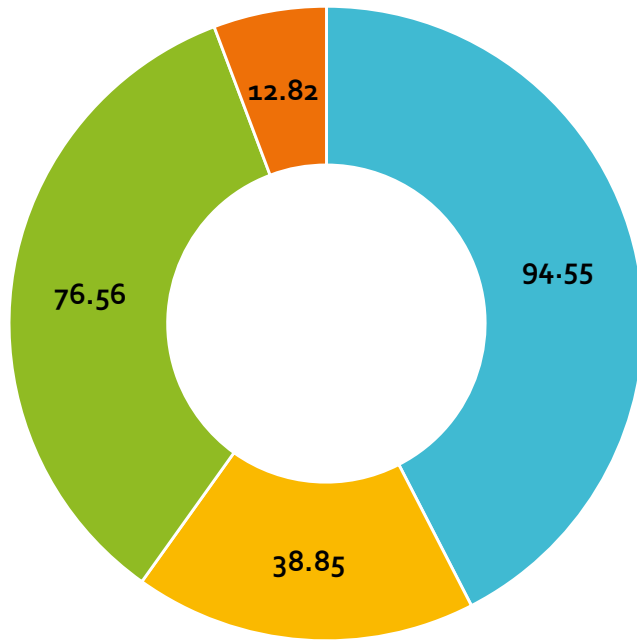
- Single Family = 41.1%
- Commercial/Institutional/Industrial = 20.0%
- Multi-Family = 27.8%
- Dedicated Landscape Irrigation = 11.1%

Total Billed Consumption 2022 (3048.72 AF)



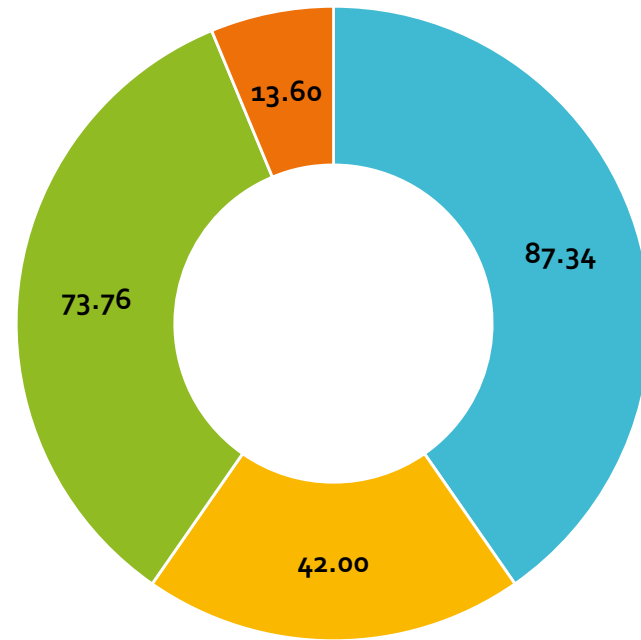
- Single Family = 38.6%
- Commercial/Institutional/Industrial = 16.9%
- Multi-Family = 27.8%
- Dedicated Landscape Irrigation = 16.7%

Billed Consumption Dec. 2021 (222.78 AF)



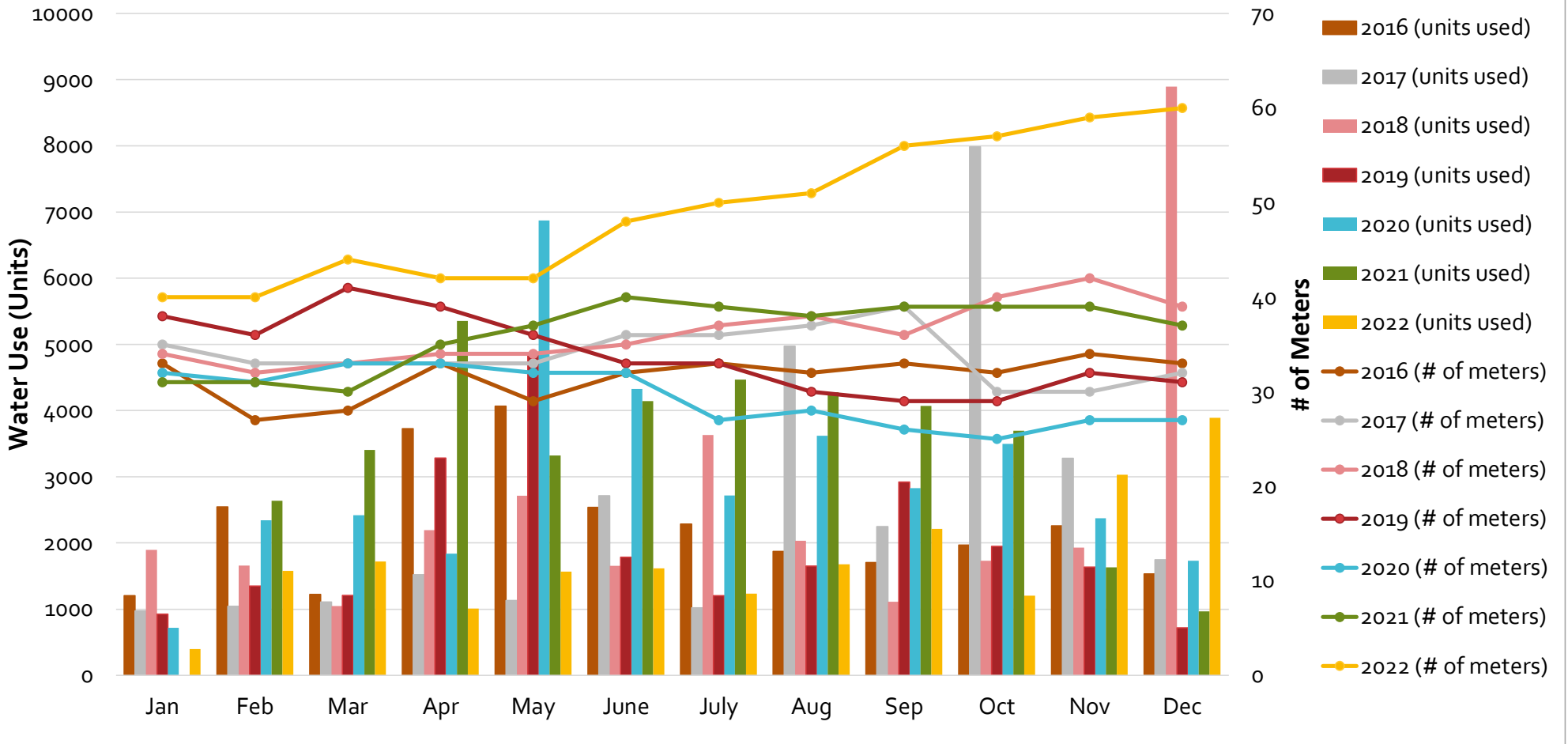
- Single Family = 42.4%
- Commercial/Institutional/Industrial = 17.4%
- Multi-Family = 34.4%
- Dedicated Landscape Irrigation = 5.8%

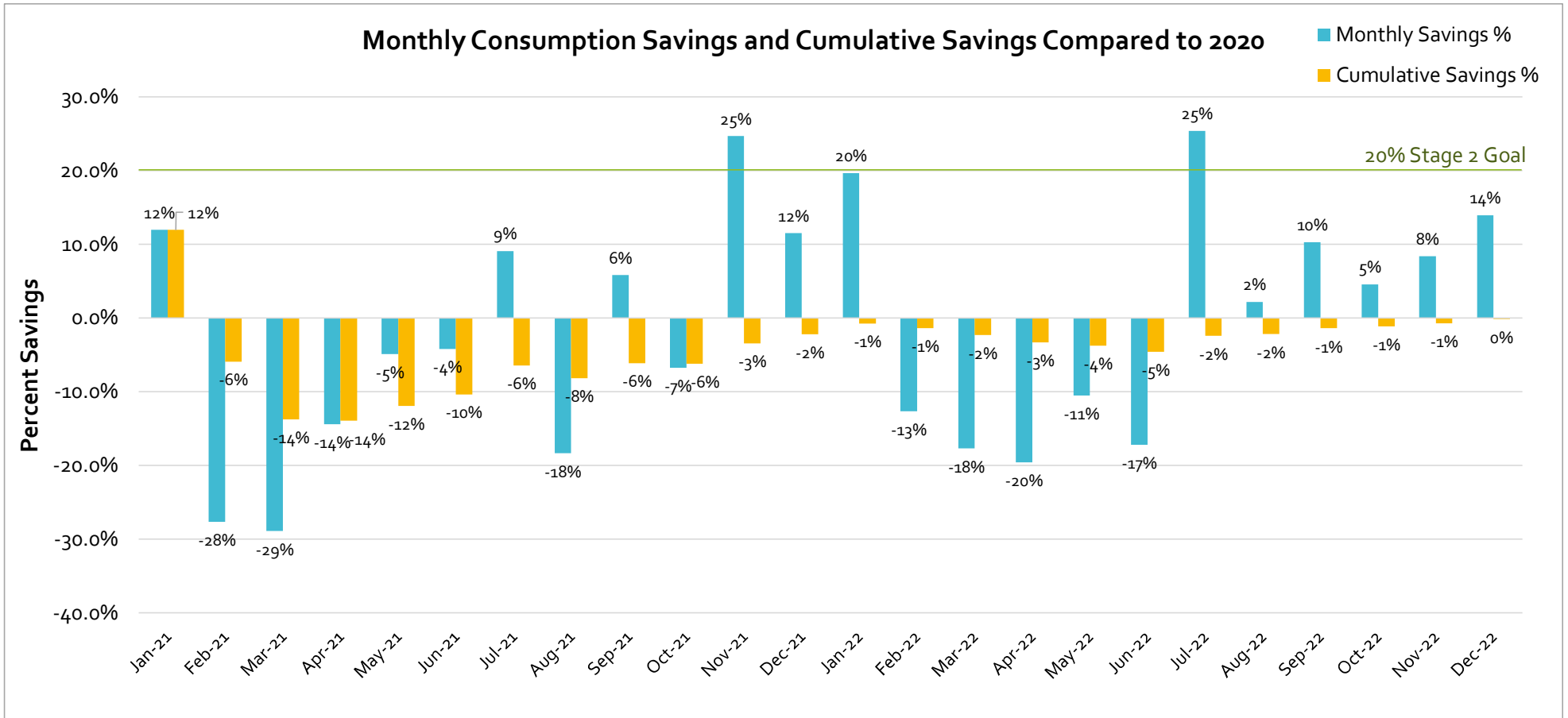
Billed Consumption Dec. 2022 (216.71 AF)



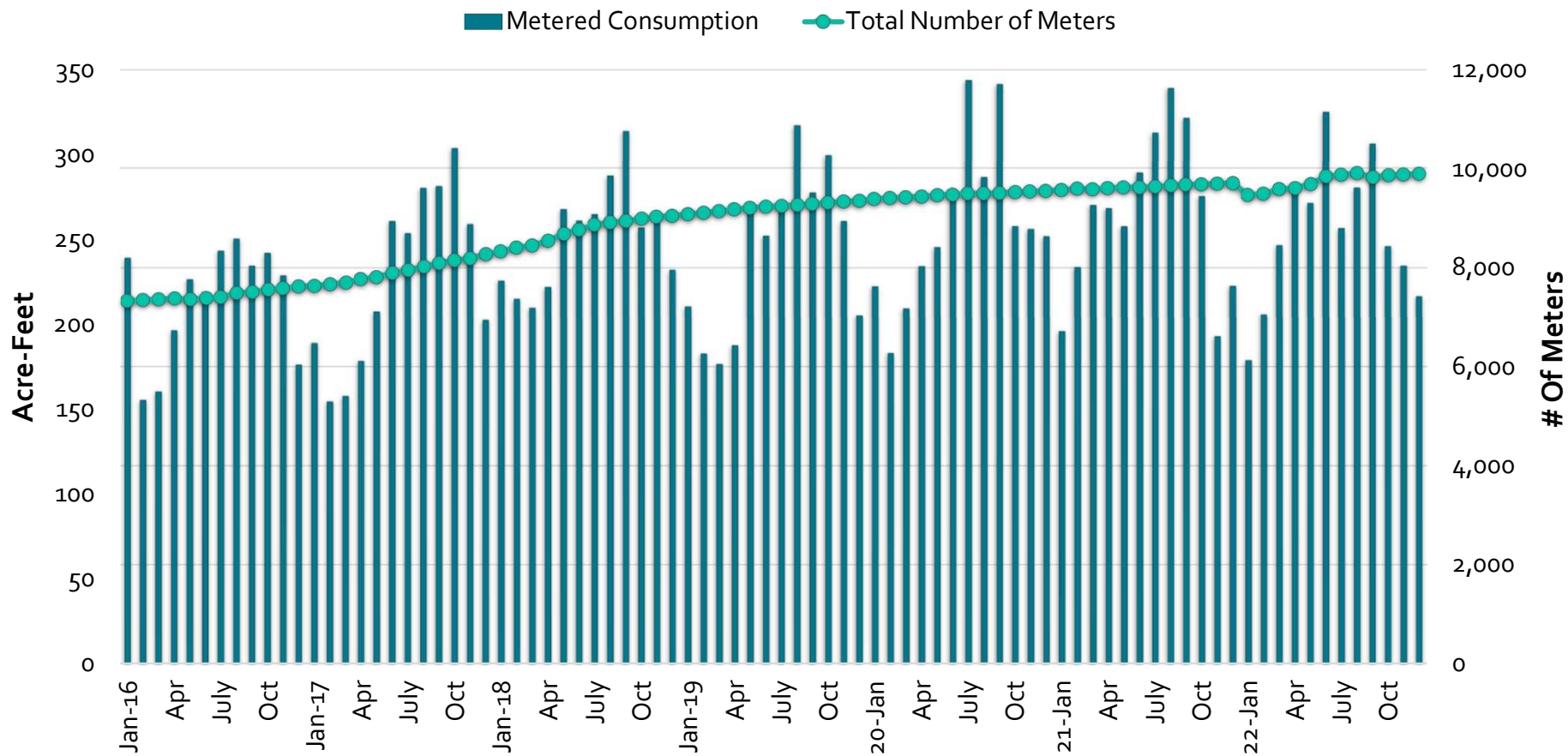
- Single Family = 40.3%
- Commercial/Institutional/Industrial = 19.4%
- Multi-Family = 34.0%
- Dedicated Landscape Irrigation = 6.3%

2016-2022 Total Temporary Hydrant Meter Water Use and # of Meters



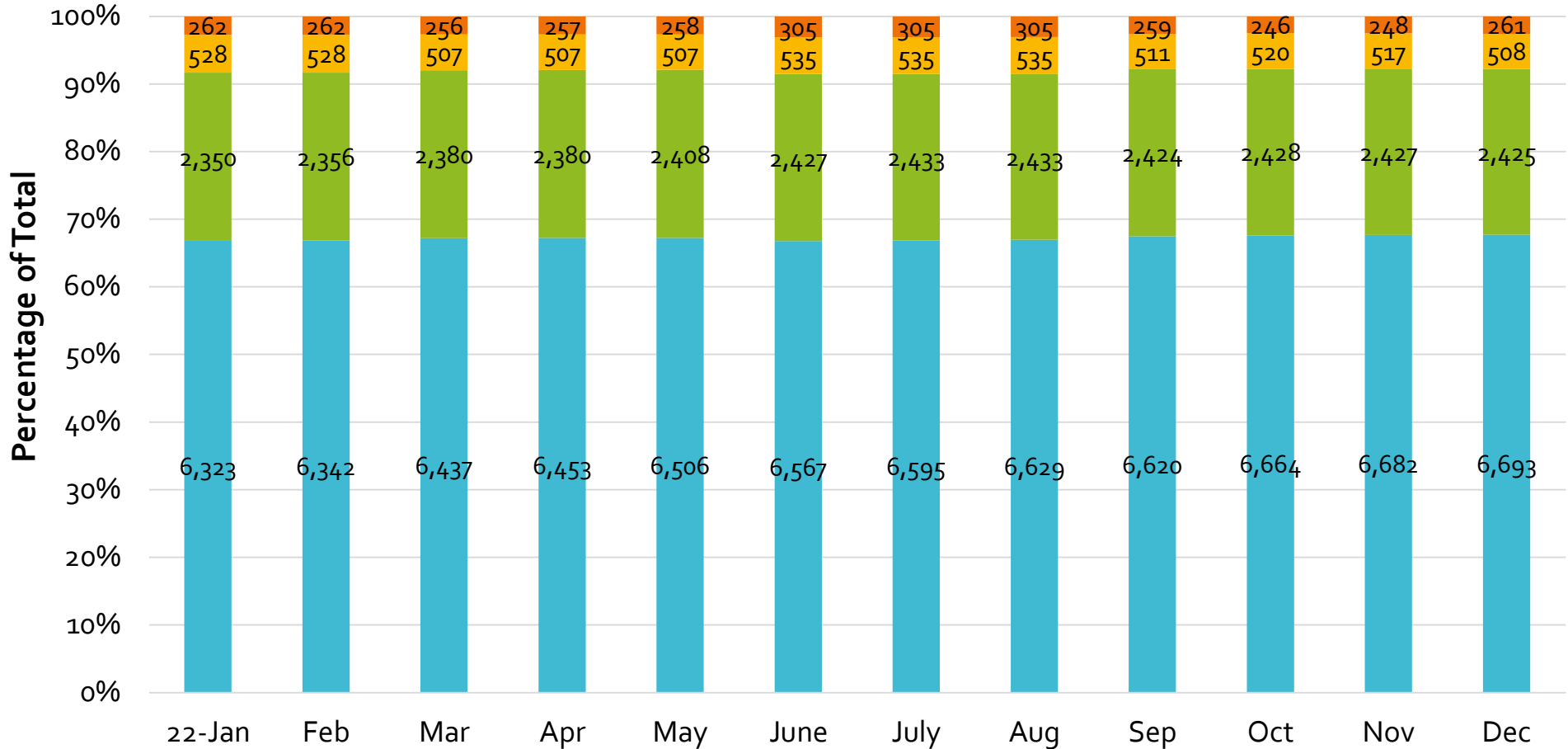


2016 - 2022 Active Meter Count vs. Metered Consumption



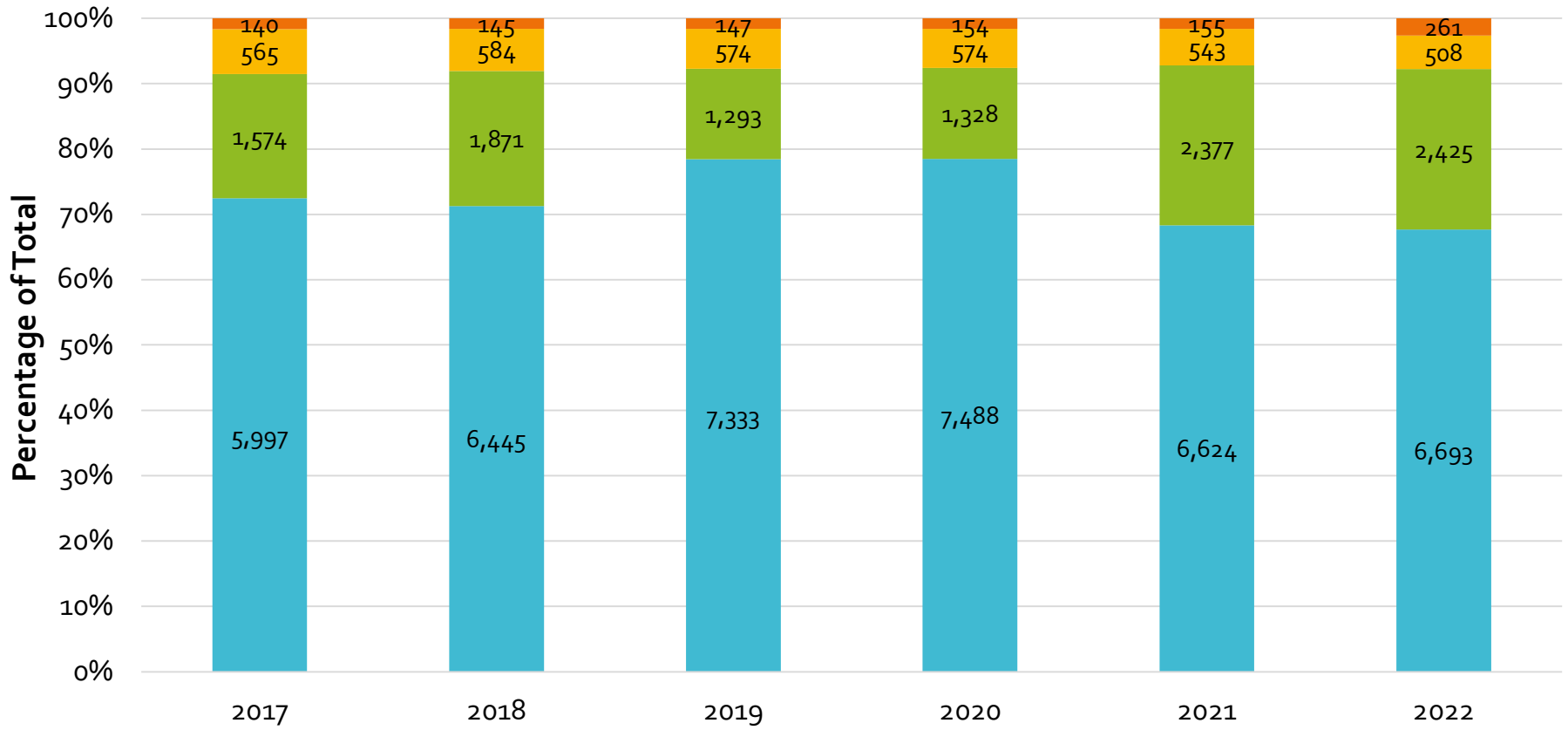
12 Month Categorical Active Meter Count

- D2. Landscape Irrigation # of Meters
- B2. Commercial/Institutional # of Meters
- C2. Multi-family Residential # of Meters
- A2. Single Family Residential # of Meters



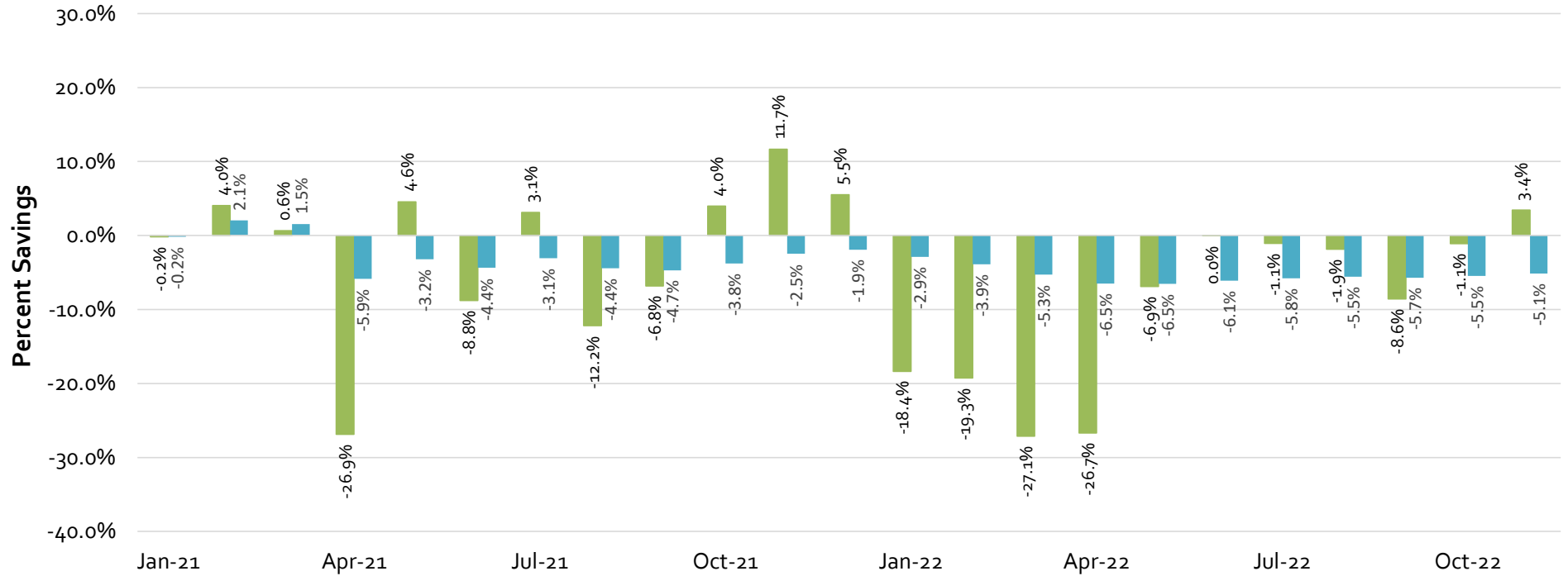
Annual Active Meter Count

- D2. Landscape Irrigation # of Meters
- B2. Commercial/Institutional # of Meters
- C2. Multi-family Residential # of Meters
- A2. Single Family Residential # of Meters



Monthly Production Savings and Cumulative Savings Compared to 2020

■ Monthly Savings %
■ Cumulative Savings %



Monthly Production Savings and Cumulative Savings Compared to 2013 Only January 2018 to Current Month Shown

